



Tokoroa Engineering

Farm equipment built to last

For all your mobile calf rearing needs visit us at:

www.tokoroaengineering.co.nz

or call us on

0508 FEEDER – 0508 333 337

Calf Trailers

High Quality that rivals others

40 Calf Trailer

ME-CT40

- ✓ 3700 x 2200mm (8.14sq meters)
- ✓ Deck height 600mm
- ✓ 2 pens/5 doors
- ✓ Mesh floors for hygiene
- ✓ All gates easily removed
- ✓ Fully hot dipped galvanized frame construction
- ✓ 40mm pivot shafts in grease-less plastic bushes
- ✓ Adjustable wheel height
- ✓ 12 month Warranty
- ✓ TARE weight 450kg



SAFETY INFORMATION FOR ALL TRAILERS

- *Must be towed by a suitable vehicle*

20 Calf Trailer

ME-CT20

- ✓ 2400 x 1700mm (4.20sq meters)
- ✓ Deck Height 580mm
- ✓ 2 pens/3 doors
- ✓ Mesh floor for Hygiene
- ✓ All gates easily removable
- ✓ Fully hot dipped galvanized
- ✓ 40mm pivot shafts in grease-less plastic bushes
- ✓ Adjustable wheel heights
- ✓ 12 month Warranty
- ✓ TARE weight 250kg



SAFETY INFORMATION FOR ALL TRAILERS

- *Must be towed by a suitable vehicle*

Calf Trailers

High Quality that rivals others

15 Calf Trailer

ME-CT15

- ✓ Size 1900 x 1500mm
(2.85sq meters)
- ✓ Deck Height 560mm
- ✓ 1 pen/1 door
- ✓ Mesh floor for hygiene
- ✓ Gate easily removable
- ✓ Fully hot dipped galvanized
- ✓ 40mm pivot shafts in greaseless plastic bushes
- ✓ Adjustable wheel heights
- ✓ 12 month Warranty
- ✓ TARE Weight 150kg



SAFETY INFORMATION FOR ALL TRAILERS

- *Must be towed by a suitable vehicle*



We deliver all across the
North and South Island

Premium Feeders

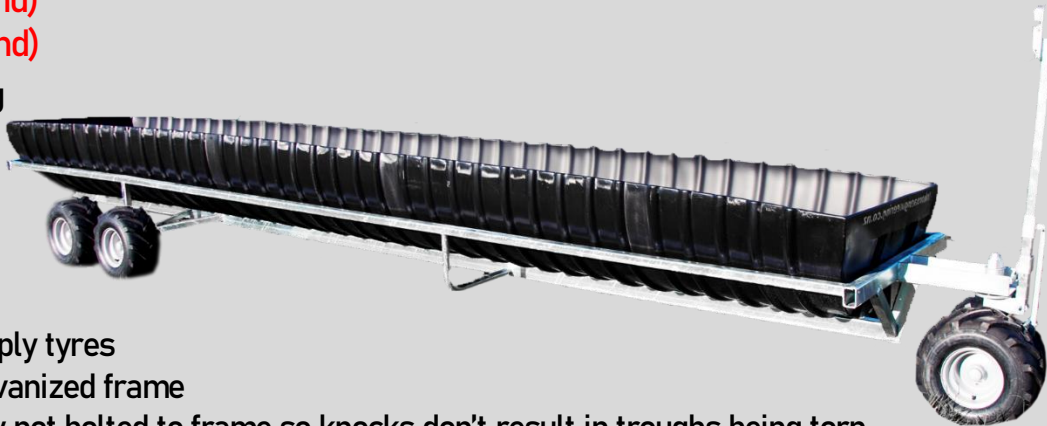
6m & 4m NZs TOP SELLER

Premium 6m Feeder

ME-FDP6-NI (North Island)

ME-FDP6-SI (South Island)

- ✓ Tare Weight – 440kg
- ✓ Gross Weight
(Palm Kernel loaded – 2000kg)
- ✓ Trough width – 1m
- ✓ Capacity 2400L
- ✓ 8 inch tractor grip 6ply tyres
- ✓ Fully hot dipped galvanized frame
- ✓ Troughs deliberately not bolted to frame so knocks don't result in troughs being torn away and for ease of cleaning
- ✓ Super heavy duty durable plastic trough with bung
- ✓ Steering and axle pivots feature incredibly durable “oily bushes” that require no lubrication and are easy and economical to replace
- ✓ Twin front wheels for improved load distribution and better turning. All wheels run on high speed bearings.
- ✓ Parking Brake can be engaged when drawbar is raised vertically out of harms ways



Premium 4m Feeder

ME-FDP4-NI (North Island)

ME-FDP4-SI (South Island)

- ✓ Tare Weight – 250kg
- ✓ Gross Weight
(Palm Kernel loaded – 1250kg)
- ✓ Trough width – 1m
- ✓ Capacity 1570L
- ✓ 8 inch tractor grip 6ply tyres
- ✓ Fully hot dipped galvanized frame
- ✓ Troughs deliberately not bolted to frame so knocks don't result in troughs being torn away and for ease of cleaning
- ✓ Super heavy duty durable plastic trough with bung
- ✓ Steering pivot feature incredibly durable “oily bushes” that require no lubrication and are easy and economical to replace
- ✓ Twin front wheels for improved load distribution and better turning. All wheels run on high speed bearings.
- ✓ Parking Brake can be engaged when drawbar is raised vertically out of harms ways



Calf Feeders

Some clever blurb

Premium Calf 6m Feeder

ME-FDC6

- ✓ Tare Weight – 300kg
- ✓ Gross Weight
(Palm Kernel loaded – 1000kg)
- ✓ Trough width – 800mm
- ✓ Capacity 1000L
- ✓ 8 inch tractor grip 6ply tyres
- ✓ Fully hot dipped galvanized frame
- ✓ Troughs deliberately not bolted to frame so knocks don't result in troughs being torn away and for ease of cleaning
- ✓ Super heavy duty durable plastic trough with bung
- ✓ Steering pivot feature incredibly durable “oily bushes” that require no lubrication and are easy and economical to replace
- ✓ Twin front wheels for improved load distribution and better turning. All wheels run on high speed bearings.
- ✓ Parking Brake can be engaged when drawbar is raised vertically out of harms ways



Premium Calf 4m Feeder

ME-FDC4

- ✓ Tare Weight – 200
- ✓ Gross Weight
(Palm Kernel loaded – 675kg)
- ✓ Trough width – 800mm
- ✓ Capacity 675L
- ✓ 8 inch tractor grip 6ply tyres
- ✓ Fully hot dipped galvanized frame
- ✓ Troughs deliberately not bolted to frame so knocks don't result in troughs being torn away and for ease of cleaning
- ✓ Super heavy duty durable plastic trough with bung
- ✓ Steering pivot feature incredibly durable “oily bushes” that require no lubrication and are easy and economical to replace
- ✓ Twin front wheels for improved load distribution and better turning. All wheels run on high speed bearings.
- ✓ Parking Brake can be engaged when drawbar is raised vertically out of harms ways



Feeders

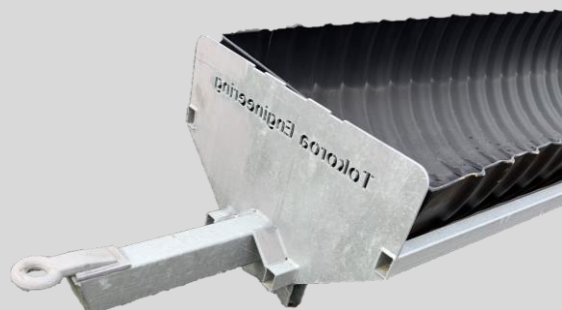
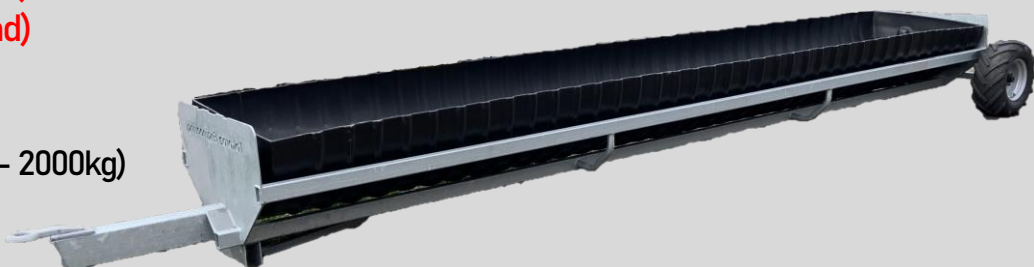
Some clever blurb

Quick Hitch 6m Feeder

ME-FDQH-NI (North Island)

ME-FDQH-SI (South Island)

- ✓ Tare Weight – 600kg
- ✓ Gross Weight
(Palm Kernel loaded – 2000kg)
- ✓ Trough width – 1m
- ✓ Capacity 2400L
- ✓ Frame height- 700mm
- ✓ 12 inch tractor grip 6ply tyres
- ✓ Fully hot dipped galvanized frame
- ✓ Troughs deliberately not bolted to frame so knocks don't result in troughs being torn away and for ease of cleaning
- ✓ Super heavy duty durable plastic trough with bung
- ✓ Built with a 50mm towing eye
- ✓ Feeds approx. 300 cows



Drawbar 4m Feeder

ME-FDDB-NI (North Island)

ME-FDDB-SI (South Island)

- ✓ Tare Weight – 150kg
- ✓ Gross Weight
(Palm Kernel loaded – 625kg)
- ✓ Trough width – 800mm
- ✓ Capacity 675L
- ✓ Frame height – 610mm
- ✓ 8 inch tractor grip 6ply tyres
- ✓ Fully hot dipped galvanized frame
- ✓ Troughs deliberately not bolted to frame so knocks don't result in troughs being torn away and for ease of cleaning
- ✓ Super heavy duty durable plastic trough with bung
- ✓ Suitable for younger stock
- ✓ Feeds approx. 120 cows



Milk Bar Mobiles

Simple, durable and
easy to use



MilkBar Classic Range

Simple feeder to Handle and Use

40 Classic

MB40SC

- ✓ Teats – 40
- ✓ Spacing – mm
- ✓ Volume – 500L
- ✓ Axle – Single
- ✓ Length – 2.2m
- ✓ Width – 1.75m
- ✓ Drawbar – 1.55m
- ✓ Weight – 145kg
- ✓ Perfect for farms where calf paddocks are fairly close to the shed.
- ✓ Single Axle



50 Classic

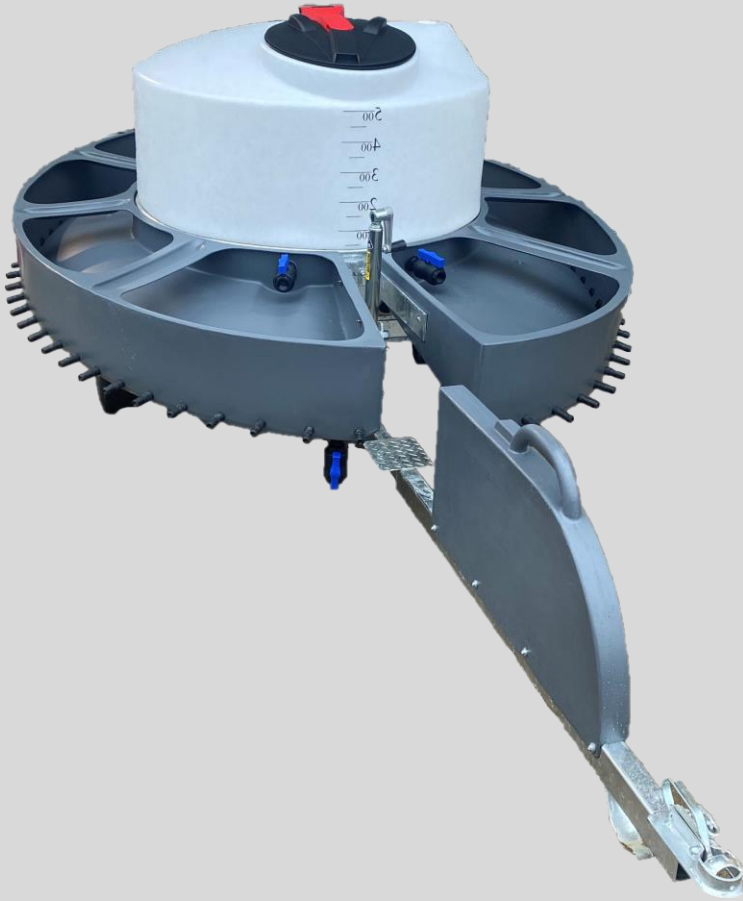
MB50SC

- ✓ Teats – 50
- ✓ Spacing – 110mm
- ✓ Volume – 500L
- ✓ Axle – Single
- ✓ Length – 2.2m
- ✓ Width – 1.75m
- ✓ Drawbar – 1.55m
- ✓ Weight – 145kg
- ✓ Perfect for farms where calf paddocks are fairly close to the shed.
- ✓ Single Axle



MilkBar Classic Range

Simple feeder to Handle and Use



60 Classic

MB60SC

- ✓ Teats – 60
- ✓ Spacing – 110mm
- ✓ Volume – 500L
- ✓ Axle – Single
- ✓ Length – 2.2m
- ✓ Width – 1.75m
- ✓ Drawbar – 1.55m
- ✓ Weight – 145kg
- ✓ Perfect for farms where calf paddocks are fairly close to the shed.
- ✓ Single Axle



FEEDERS AVAILABLE FOR
LAMBS, PLEASE ENQUIRE

MilkBar Deluxe Range

Ideal for larger operations or where distance is travelled

40 Deluxe



50 Deluxe

MB50SD- 50teat, Single Axle, 500l Tank

MB50TD- 50teat, Tandem Axle, 500l Tank

MB50T750D- 50teat, Tandem Axle, 750l Tank

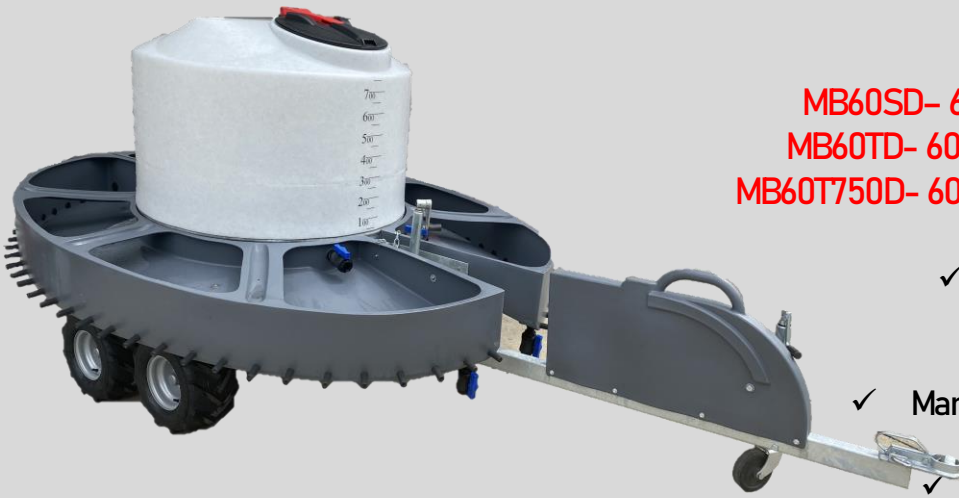


- ✓ Single Axle weight - 145kg
 - ✓ Tandem Axle weight - 184kg
 - ✓ Drawbar length - 1.55m
 - ✓ Teat spacing - 110mm
 - ✓ Manifold volume - 250l (125l each)
 - ✓ Sideways levelling
 - ✓ Suspension for a smooth ride
 - ✓ Drawbar handle, guard and jockey wheel
 - ✓ Increased wheel base of 1.35m
 - ✓ Two drain taps for easy cleaning
 - ✓ Round tank eliminates milk surge for stability
 - ✓ Manual leveler ensures even flow of milk
 - ✓ Moulded 50mm thread in tank for pump or hose
- ✓ The center bush of the walking beam is an oily bush which is self lubricating and ultra durable

MilkBar Deluxe Range

Ideal for larger operations or where distance is travelled

60 Deluxe



MB60SD- 60teat, Single Axle, 500l Tank
MB60TD- 60teat, Tandem Axle, 500l Tank
MB60T750D- 60teat, Tandem Axle, 750l Tank

- ✓ Single Axle weight – 157kg
- ✓ Tandem Axle weight – 196kg
- ✓ Drawbar length – 1.25m
- ✓ Teat spacing – 110mm
- ✓ Manifold volume – 300l (150l each)
- ✓ Sideways levelling
- ✓ Suspension for a smooth ride
- ✓ Drawbar handle, guard and jockey wheel
- ✓ Increased wheel base of 1.35m
- ✓ Two drain taps for easy cleaning
- ✓ Round tank eliminates milk surge for stability
- ✓ Manual leveler ensures even flow of milk
- ✓ Molded 50mm thread in tank for pump or hose
- ✓ The center bush of the walking beam is an oily bush which is self lubricating and ultra durable



ALL MANUFACTURED AND
ASSEMBLED IN TOKOROA,
NEW ZEALAND

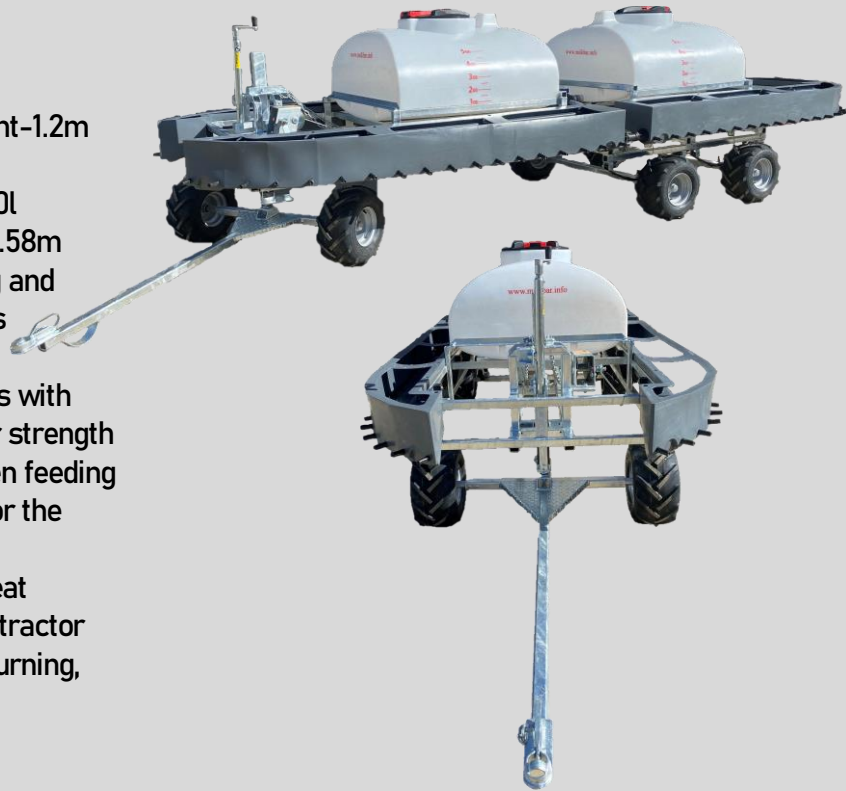
MilkBar 80 and 100

The ultimate in mobile calf feeders

80 Calfeteria

MB80

- ✓ Feeder length- 5.5m. Width- 1.8m. Height-1.2m
- ✓ Drawbar length- 2m
- ✓ Tank Volume 1,100L. Manifold Volume 400L
- ✓ Front axle track 1.18m. Rear axle track 1.58m
- ✓ Twin tanks with moulded in pump casing and holding 550L each with marked gradients
- ✓ 50mm taps and plumbing
- ✓ 75x50mm galvanized box section chassis with suspension and tandem axles at rear for strength
- ✓ Manual leveler levels the manifolds when feeding on uneven ground and lowers one end for the complete drainage and cleaning
- ✓ No tuning limit to steering axle gives great maneuverability. A long drawbar keeps tractor wheels away from the manifolds when turning, and allows good access for calves.



100 Calfeteria

MB60SD- 60teat, Single Axle, 500L Tank

MB60TD- 60teat, Tandem Axle, 500L Tank

MB60T750D- 60teat, Tandem Axle, 750L Tank

- ✓ Feeder length- 7.1m. Width- 1.8m. Height-1.2m
- ✓ Drawbar length- 2m
- ✓ Tank Volume 1,100L. Manifold Volume 500L
- ✓ Front axle track 1.18m. Rear axle track 1.58m
- ✓ Twin tanks with moulded in pump casing and holding 550L each with marked gradients
- ✓ 50mm taps and plumbing
- ✓ 75x50mm galvanized box section chassis with suspension and tandem axles at rear for strength
- ✓ Manual leveler levels the manifolds when feeding on uneven ground and lowers one end for the complete drainage and cleaning
- ✓ No tuning limit to steering axle gives great maneuverability. A long drawbar keeps tractor wheels away from the manifolds when turning, and allows good access for calves.



Calf Feeding extras

Milk Mixer

MBMIX550

- ✓ 550L tank with marked gradient
- ✓ 45cm diameter opening
- ✓ Galvanised trailer
- ✓ Drain tap for cleaning
- ✓ Large carry tray
- ✓ 2" electric start petrol pump with a 10m hose and nozzle
- ✓ Circulating system to mix milk powder



Milk Kart 500l

MBMK550C- Classic (No pump)

MBMK550D- Deluxe, incl 12volt pump

- ✓ 45cm diameter opening
- ✓ Galvanised trailer
- ✓ Drain tap for cleaning
- ✓ 550L tank with marked gradient
- ✓ Large carry tray
- ✓ 12volt milk pump with 10m hose and nozzle

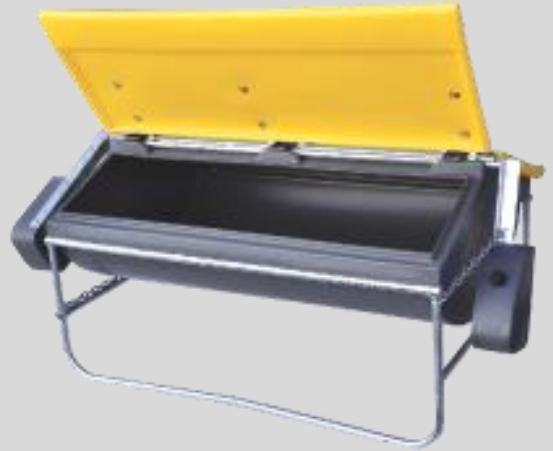


Calf Feeding extras

Meal Saver

MBMS

- ✓ Holds 150kg
- ✓ L 1.2m x W 800mm
- ✓ Opening H 550mm. Total H 730mm
- ✓ Eliminates meal wastage
- ✓ Totally wind, rain and pest proof
- ✓ Keeps meal dry and edible
- ✓ Counter balance lids that calves can easily lift with their noses
- ✓ Fitted with skids
- ✓ Lids are chained up for training. Once calves are trained, reduce the weight in the counter balance by letting some water out. Now calves lift the lids with their noses and the meal is now protected from rain and pests.



Saves Meal,
Saves Money



Leading the
Market with design
and quality

Spare Parts

Calf Trailers and Feeders

MB-AX-4 4mtr Rear Axle 40x275mm 	ME-B-B Brake Bar 
ME-AX-6 6mtr Rear Axle 40x185mm 	ME-B-S Brake Slider 
ME-AX-CT Steering Head & Calf Trailer Axle 40x270mm 	ME-B-L Brake Locker 
ME-AX-WB Walking Beam Axle 32x225mm 	ME-WH-TG Wheel Tractor Grip Driver or Passenger Side 
ME-AX-DE Double Ended Steering Head Axle 32x410mm 	ME-WH-TURF Wheel Turf 
ME-WASH Steering head washer 40ID 	ME-RIMG Rim Galvanised 
ME-BUSH50 Walking Beam Bush 50mm long, 50 OD, 40 ID 	ME-RIMP Rim Painted 
ME-BUSH75 Steering Head & Calf Trailer Walking Beam Bush. 75mm long 	ME-WH-BK Wheel Bearing Kit 
ME-WB-6 Walking Beam 6mtr feeder 640mm 	ME-TR6 Trough replacement 6mtr 
ME-WB-CT40 Walking Beam Calf Trailer 700mm long with boss 	ME-TR4 Trough replacement 4mtr 
ME-WB-CT20 Walking Beam Calf Trailer 640mm long with boss 	ME-TRC4 Trough replacement 4mtr Calf Feeder 
ME-DB-O Draw Bar Only 	ME-TRC6 Trough replacement 6mtr Calf Feeder 
ME-DB-C Complete Draw Bar 	

Spare Parts

MilkBar Calferterias

MB-MAN-8 Manifold 8 teat (for MB100 & MB80)		MB-LJ Levelling Jack (for levelling tank)	
MB-MAN-18 Manifold 18 teat (for MB80)		MB-JW Jockey Wheel	
MB-MAN-23 Manifold 23 teat (for MB100)		MB-IP Inspection Port	
MB-MAN-25 Manifold 25 teat (for MB50)		MB-BU32 Bung (for MB50 & MB60)	
MB-MAN-30 Manifold 30 teat (for MB60)		MB-BU391 Bung (for MB80 & MB100)	
MB-TNK-500 500Litre Tank		MB-SL Screw Lid	
MB-TNK-550 550Litre Tank		MB-FOL Fold Over Lid	
MB-TNK-750 750Litre Tank		MB-BC Breather Cap	
MB-TS-500 Tank Sticker 500Litre		MB-SN Star Nut	
MB-TS-750 Tank Sticker 750Litre		MB-WB-D Walking Beam MilkBar Deluxe 640mm long with boss	
MB-SSC Stainless Steel Clip		MB-SH Suitcase Handle	
MB-SP3 and MB-SP4 Spring 3Leaf and 4Leaf		MB-MF Mud Flap	

